



Design by Helena Chmelíková



BROOCH MADE USING PRECIOSA TWIN™ AND PRECIOSA FARFALLE™

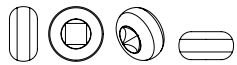
Autumn Twilight



PRECIOSA

PRECIOSA Rocailles

331 29 001; 11/0; 10/0



PRECIOSA Twin™

321 96 001; 2,5 x 5 mm



PRECIOSA Rocailles

331 19 001; 10/0



PRECIOSA Farfalle™

321 90 001; 3,2 x 6,5 mm



*Preciosa Ornela introduces beads and seed beads
from the PRECIOSA Traditional Czech Beads™ brand.*

Autumn Twilight

Adorn yourself with an original brooch in the color shades of autumn.

PRECIOSA Farfalle™ and PRECIOSA Twin™, delicate rocailles and pressed beads, supplement each other both with their shape and with their color combinations.

Using beads and seed beads from the PRECIOSA Traditional Czech Beads™ brand will enable you to create an untraditional variant of a traditional accessory.

Materials and tools:

PRECIOSA Rocailles (R)

331 29 001; 11/0; 57150; about 320x
331 29 001; 10/0; 57220; 84x



331 19 001; 10/0; 08298; 111x

331 19 001; 10/0; 29010; 130x



PRECIOSA Twin™ (T)

321 96 001; 2,5 x 5 mm; 28986; 48x

321 96 001; 2,5 x 5 mm; B2707; 32x



321 96 001; 2,5 x 5 mm; 58142; 54x

PRECIOSA Farfalle™

321 90 001; 3,2 x 6,5 mm; 28928; 48x



PRECIOSA Pressed Beads

6.8 mm red balls; 3x
6.8 mm green balls; 2x
purple olives (various sizes); 3x



- a Ø 21 mm brooch sieve (any metal finish, gold is used here),
a Ø 22 mm brooch base with attachment prongs or with the option of gluing (any metal finish, gold is used here),
6x metal rocaille crimp beads (any metal finish, gold is used here);
Ø 0.50 mm binding wire (any metal finish, gold is used here);
Ø 0.35 mm regular or green wire

- Ø 0.20 mm nylon line, a thin needle, scissors, snipping pliers, flat nose pliers, a pointed implement to fold over the prongs on the brooch base



Difficulty:

Technique: stringing on wire, stringing on costume jewellery wire, sewing onto the perforated base plate

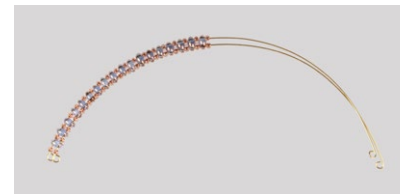
Procedure:

12 loops strung onto the wire will be attached to the brooch. The centre will be filled with “antennae” with pressed shapes strung onto the nylon line. The green spirals will be strung onto the crimped wire.

Step 1

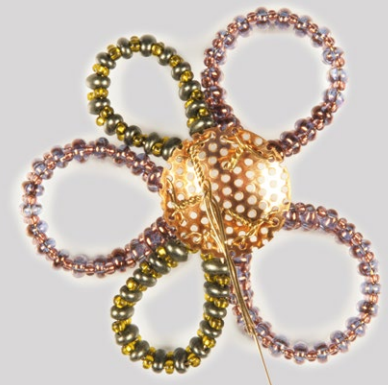
Divide the sieve into six segments of the same size (they can be marked using an indelible marker). Start filling the sieve from the edge. First create the green loops with oval arches. Cut two wires at a length of 16 cm. Make a securing loop in both of them. On one wire, alternately string the rocailles and Twins (15x 10/0 R and 14x T). After completing the stringing, create a second loop on the wire.

Use the second wire to string the rocailles between the second holes of the Twins (15x 10/0 R and 14x T). Create a loop. Cut the loops off the wires. Remove the last rocailles from the outer wire. Fill the edge of the segments with the loop. Thread the wire through the four openings lying next to one another. Twist the wire at the back and adjust the loop. Pull the wire through and twist it using the flat nose pliers. Shorten the twist to 0.5 – 0.7 mm and press it in to the sieve.



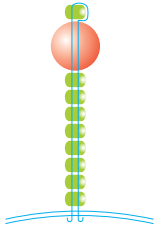
Step 2

Add another two green loops to every second segment. Create purple-brown loops for the empty segments as much as possible up to the edge. Proceed in the same way as for the green loops. Shape the arches in a circle. Alternately string 19x 10/0 R and 18x T. Thread the ends of the loops into the sieve further from each other than in the case of the green ones, with a small gap between them. String the outer wires onto the lines dividing the individual segments. Now add the loops made of Farfalles. Cut off 16 cm from the wire and create a securing loop. Pass the lines through two openings in the sieve directly above the green loops. Twist the wire from the back again and then cut it off and press it in. Add the dark pink (fuchsia) loops last. Create them almost at the tops of the segments; in the same segments as the ones with the purple-brown loops. Alternately string 15x 10/0 R and 14x T onto a wire. Shape the arches into ovals. Twist them more into space. Thread it through three openings. Only use one opening to thread the internal wire.



Step 3

Sew the “antennae” onto the centre of the sieve and between the ends of the fuchsia loops. Tie the nylon line to the sieve. The knot and the short end are located at the back. Pass through the sieve to the front. String 8x R (10/0 08298 or 11/0 57150), a ball and 1x R next to the “antennae” with the 8 mm balls (3x red, 2x green). Return to the 8 mm ball and to the 8x R. Also thread it through the opening. Come up from the back in the next hole and you can then start sewing on another “antenna”. String 6x 10/0 R (purple with a copper lining), an olive and 1x 10/0 R next to the “antenna” with the olive (3x). Go back into the olive and to the bottom 6x 10/0 R. They are not regularly sewn – as such, you can arrange them as you wish.









Step 4

Attach the green spirals on the crimped wire between the ends of the two purple-brown loops. Cut off 15–20 cm of wire. Crimp it – pass the edge of the scissors/ a ruler over it along the edge of the table. Be careful not to scratch it! String the metal crimp bead and 1x glass rocaille onto the crimped end. Return to the crimp bead and squeeze it using the flat nose pliers. String the R onto the crimped section from the other end. Also hide the second end in the metal crimp bead. Attach one green spiral to the left-hand loop and 2 to the right-hand one.



Step 5

Attach the decorated sieve to the broach base. Glue it (using hot melt adhesive or a two-component adhesive) or fold over the metal prongs. Use the pointed implement (the end of the scissors/ the closed end of the pliers) to press the prongs to the sieve. This can also be modified or shortened.

-  GREEN LOOPS
-  PURPLE-BROWN LOOPS
-  PINK LOOPS
-  PURPLE FARFALLE LOOPS
-  DARK GREEN SPIRALS
-  ANTENNAE

