



Design by Helena Chmelíková

PRECIOSA Rocailles

311 19 001; 34/0; 33/0; 8/0; 4/0; 3/0

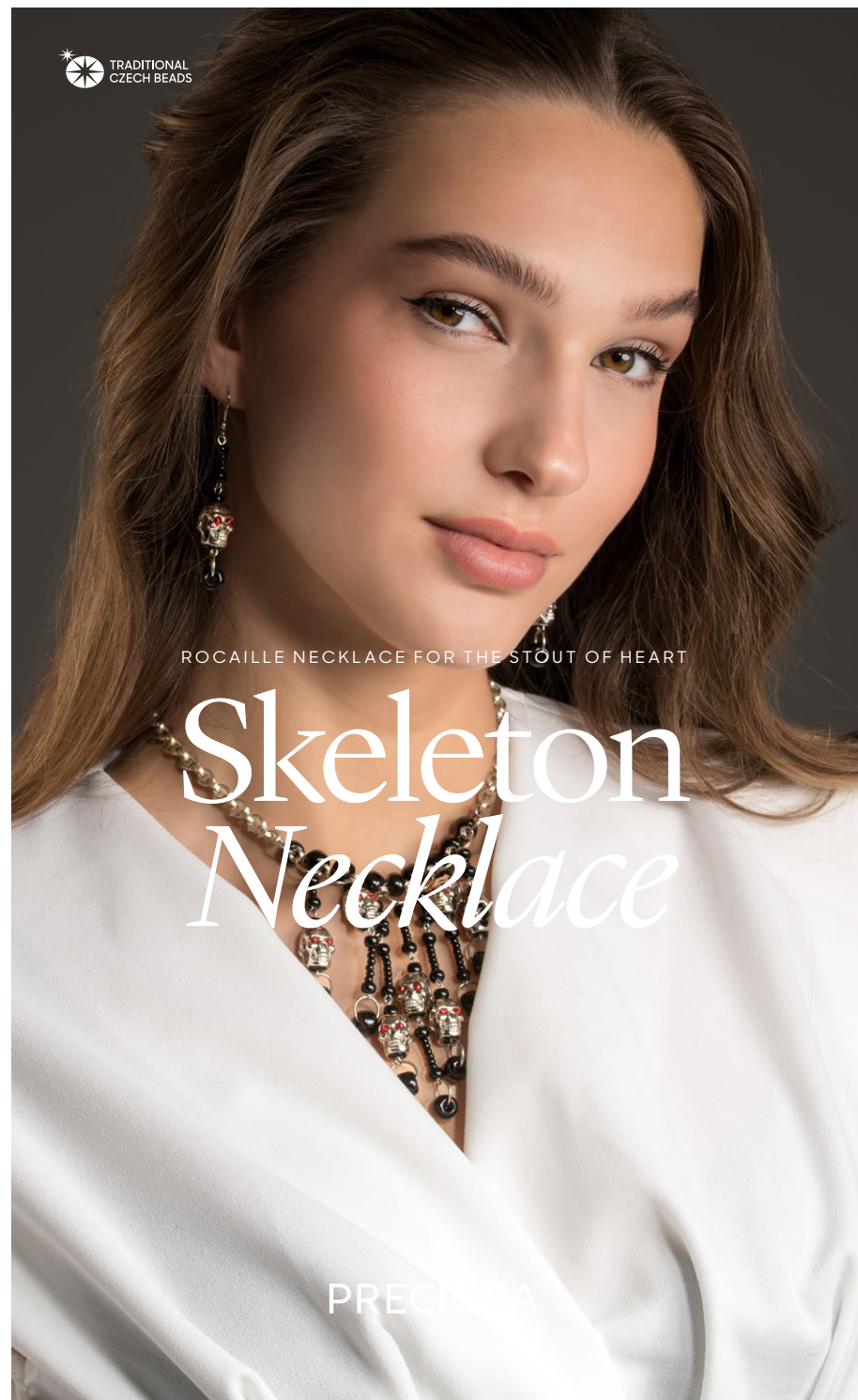
PRECIOSA Rocailles

331 19 001; 9/0



*Preciosa Ornela introduces seed beads
from the PRECIOSA Traditional Czech Beads™ brand.*

Preciosa-Ornela.com



TRADITIONAL
CZECH BEADS

ROCAILLE NECKLACE FOR THE STOUT OF HEART

Skeleton Necklace

PRECIOSA

Skeleton Necklace

Are you unafraid to stand out from the crowd? This Skeleton Necklace is a daring piece of jewelry that combines a dark style with the shine of PRECIOSA Rocailles. The contrast between the black rocailles and the silver skulls gives rise to an unmistakable accessory that will provide your outfit with a strong dose of self-confidence. This tutorial will show you how easy it is to make this original piece for yourself.

Materials and tools:

PRECIOSA Rocailles (R34)
311 19 001; 34/o or 33/o;
23980 black; 16x



PRECIOSA Rocailles (R4)
311 19 001; 4/o or 3/o;
23980 black; 55x



PRECIOSA Rocailles (R8)
311 19 001; 8/o;
23980 black; 48x



PRECIOSA Rocailles (R)
331 19 001; 9/o;
97070 ruby silver lining;
28x (you can also use 8/o or 10/o depending
on the size of the eye sockets)



- an end piece for a cord – skulls
(skulls with side openings and opposite
facial parts are suitable for filling the eye
sockets);
10 mm rings (16x); 5 mm rings (21x);
30 mm eye pins (17x);
a chain (10 links – 4,5 cm); a carabiner



- flat-nose pliers (2x); needle-nose pliers
or pliers with a truncated round point +
snipping pliers; large snipping pliers
(if you are using a chain made of stronger
material); scissors; a thin needle;
a 0.25 mm silicon line



Difficulty: ●●●●●

Technique: eye pin linking

Procedure:

Step 1:
If it is not possible to sew an R into
the eye socket on your skull, omit Step 1.
If you have skulls with side openings and
opposite facial parts, you can fill the eye
sockets in the skulls. String about 50 cm
of the line into the eye of the needle.
Thread it through the side opening and
the eye socket. String 1x R. Pass the line
through the same eye socket and side
opening. Fill the adjacent eye socket on
the same facial part. Once again use
the side opening and add 1x R.
Continue in the same way in the opposite
facial section. After filling the eye sockets,
tie off both ends of the line with three
knots. Thread both ends of the line through
the opposite side opening. Cut off the ends.



Step 2
Create the central hanging

2a
Slightly open a 10mm ring and string a R34
onto it. Add the eye of an eye pin.
Close the ring.



2b
String 1x R4, 6x R8 and 1x R4 onto the eye
pin. The ideal length of the protruding wire
is 8 mm. If necessary, snip the wire to
the required length. Grasp the end
of the wire with pliers between the rounded
points. Move your wrist to twist the wire
around the point. Hold the eye pin with
the R in your other hand. Insert the eye
of a new eye pin before fully closing the eye.
Close.



2c
String 4x R4 onto the eye pin (this number
will be influenced by the size of the cavity
on the end piece). String the skull from
the lower jaw. String 1x R4. Make an eye,
preferably on 8 mm of wire. Insert the eye
of a new eye pin before closing.
Close the eye.



2d
String 1x R4, 6x R8 and 1x R4 onto an eye
pin. Make an eye.



Step 3
Create the two side pendants that go
nearest to the central one. String 1x R34
and the eye of a new eye pin onto a 10 mm
ring. String 3x R4, a skull and 1x R4 onto
an eye pin. Make an eye. Insert the eye
of a new eye pin before closing.
String 1x R4, 6x R8 and 1x R4 onto it.
Make an eye. Insert the eye of a new eye pin
before closing. String 1x R4, 3x R8 and
1x R4 onto it. Make an eye.



Step 4

Create two side pendants - the second ones from the centre. String 1x **R34** and the eye of a new eye pin onto a 10 mm ring. String 1x **R4**, 6x **R8** and 1x **R4** onto it. Make an eye. Insert the eye of a new eye pin before closing. String 3x **R4**, a skull and 1x **R4** onto it. Make an eye.



Step 5

Create two side pendants - the outer ones. String 1x **R34** and the eye of a new eye pin onto a 10 mm ring. String 3x **R4**, a skull and 1x **R4** onto it. Make an eye. Insert the eye of a new eye pin before closing. String 1x **R4**, 3x **R8** and 1x **R4** onto it. Make an eye.



Step 6

Prepare 16x closed 5 mm rings.



Step 7

String 2x 5 mm rings, the top eye of the central pendant, 2x 5 mm rings and 1x **R34** onto a 10 mm ring. Close the ring.



Step 8

Continue gradually connecting the pendants from the centre outwards. Open a new 10 mm ring. String 2x 5 mm rings, the top eye of a pendant, 2x 5 mm rings from the already connected 10 mm ring of the adjacent pendant and 1x **R34**. Close the 10 mm ring.



Step 9

Connecting the chain. Snip off two times 16-16.5 cm of chain. Connect 2x 5 mm rings to the outer links. Open a 10 mm ring. String 2x 5 mm rings, a link from the chain, 2x 5 mm rings from the outer pendant and 1x **R34** onto it. Close the 10 mm ring. Attach a carabiner to the top outer link of one chain using a 5 mm ring.

