



*Design by Helena Chmelíková*

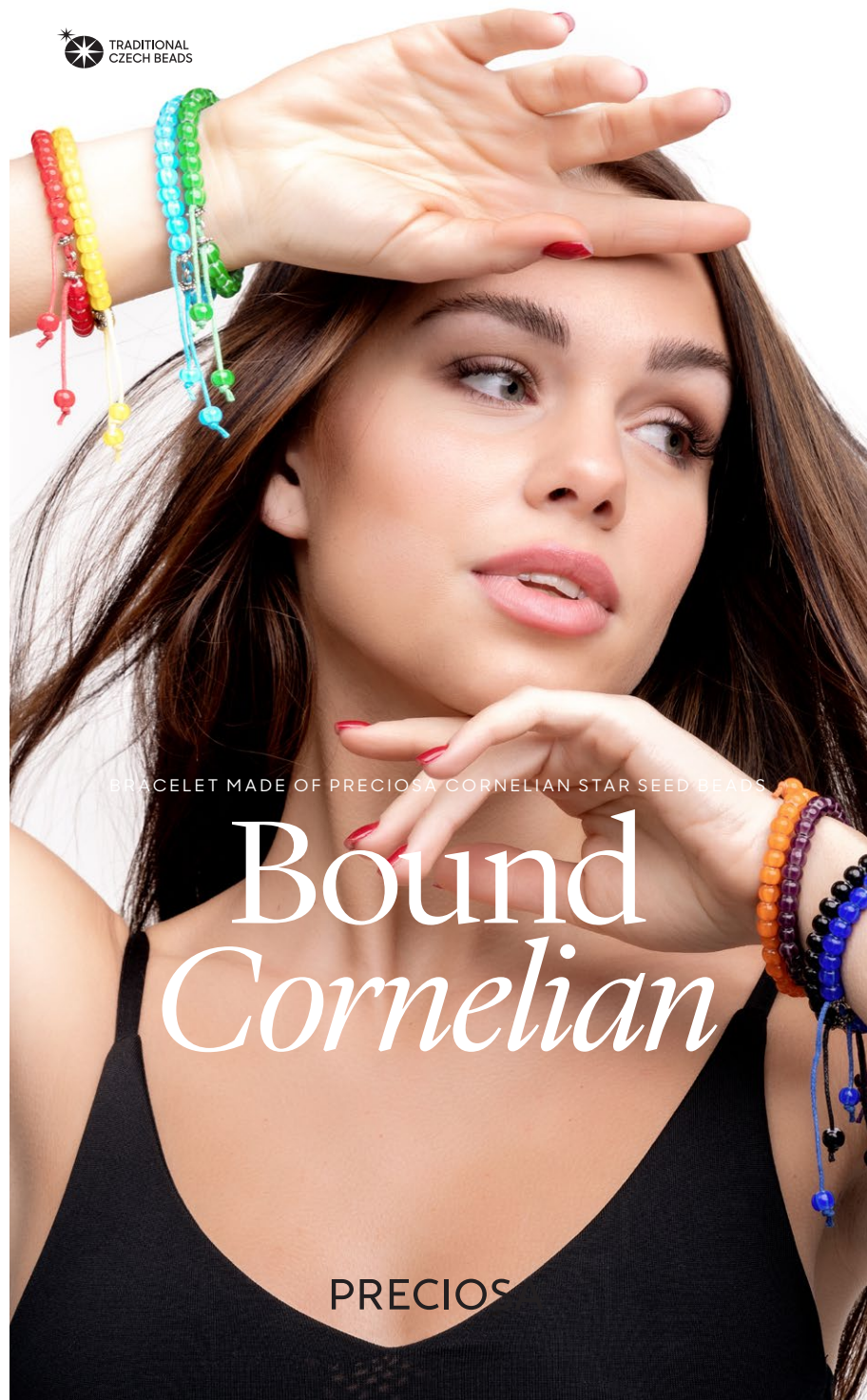
**PRECIOSA Cornelian Star**

311 69 001; 1/0; 31



*Preciosa Ornela introduces seed beads  
from the PRECIOSA Traditional Czech Beads™ brand.*

Preciosa-Ornela.com



BRACELET MADE OF PRECIOSA CORNELIAN STAR SEED BEADS

# Bound Cornelian

PRECIOSA

# Bound Cornelian

*You can make simple, cord or also minimalist bracelets using this tutorial. Just string some PRECIOSA Cornelian Star seed beads, which are unique in the world, onto a cord. This seed bead is distinguished by a white intermediate layer in the shape of a six-pointed star, where the points of the white core shine with a transparent overlay and whose shadows create the impression of delicate stripes. These bracelets will go perfectly with every outfit.*

## Materials and tools:

PRECIOSA Cornelian Star (KH)  
311 69 001; 1/0 or 31;  
83701 yellow; 30 - 35x



- a decorative metallic piece with  
a 1.8 - 2 mm insertion (2x); 4 mm rings;  
a cord with a diameter of 0.8 - 1 mm



- scissors; a ruler; flat nose pliers;  
a 0.20 - 0.30 mm nylon line

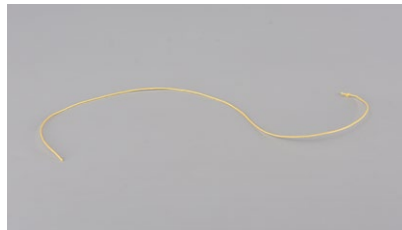
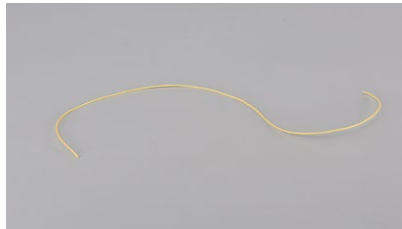


Difficulty: ●●●●●

Technique: stringing

## Procedure:

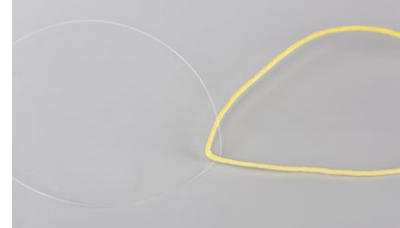
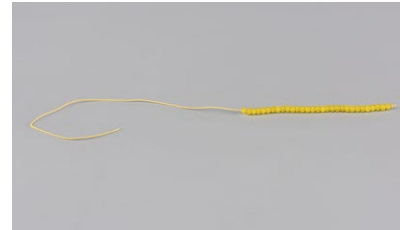
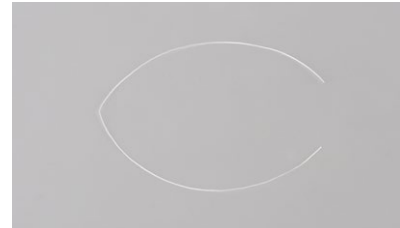
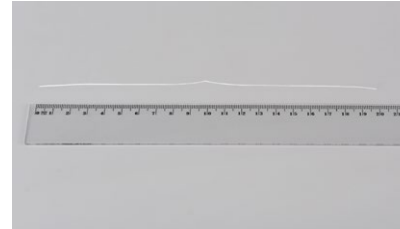
Step 1  
Cut off about 50 cm of cord. Tie a knot on  
one end of the cord.



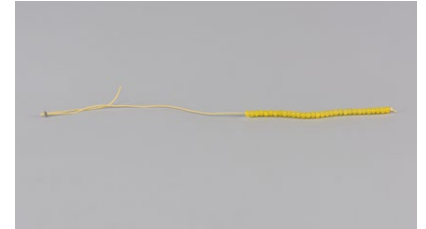
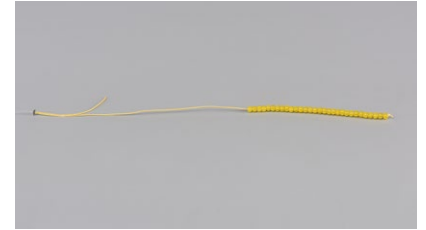
Step 2  
String about 15 cm of KH.



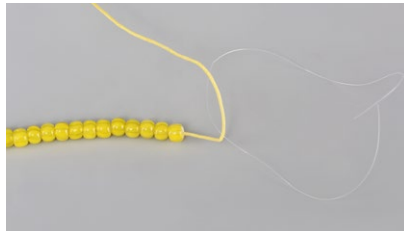
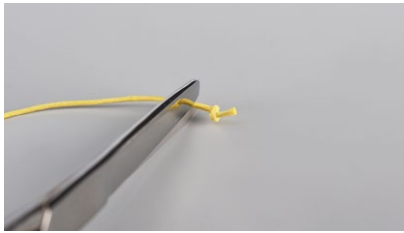
Step 3  
Cut off about 20 cm of the line.  
Fold it in half. Fold the cord about 10 cm  
from the end without the knot.  
Place the line in the fold in the cord.



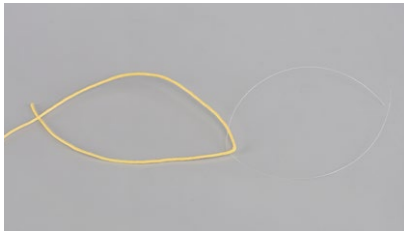
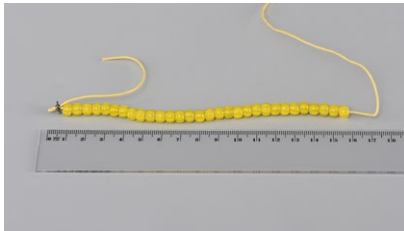
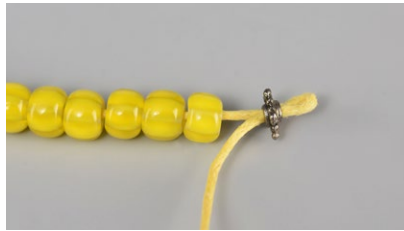
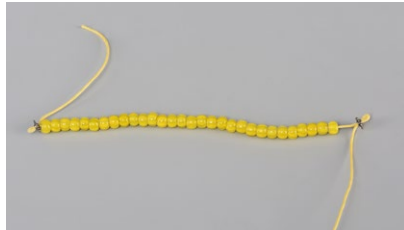
Step 4  
String the hole (insertion) in the metal part.  
Slide it up to the cord. Pull it onto the cord.  
Create an approximately 0.5 cm loop.  
You can hold the line with the flat nose  
pliers and push on the metal part.



**Step 5**  
Cut off the knot at the end of the cord.  
Fold the second end and insert the line  
about 17,5 cm from the fold for the first loop.



**Step 6**  
String and pull the second metal part onto  
the cord.



**Step 7**  
Connect both cord loops using two rings.  
Use the flat nose pliers.



**Step 8**  
String 1x KH onto each end of the cord.  
Tie a knot 4 cm from the metal part.  
Cut off any excess cord about 3 - 5 mm from  
the knot.



**Putting the bracelet on your wrist**

Loosen one of the cord loops.  
The loop can be enlarged and the KH  
moved up to the metal part. Slide it onto  
your wrist. Hold the KH next to the metal  
part with the fingers on the hand with  
the bracelet. Hold the metal part with  
the fingers of the other hand. Pull on the  
cord behind the KH and tighten.  
This is how to handle both cord loops.  
When removing the bracelet, slowly release  
the fingers on the hand without the bracelet  
and pull the bracelet over your hand.