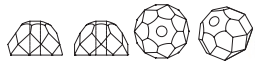




Design by Helena Chmelíková

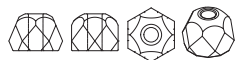
PRECIOSA Hill™

151 01 357; 8 mm



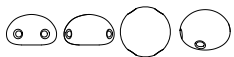
PRECIOSA Hill™

151 01 357; 6 mm



PRECIOSA Candy™

111 01 363; 8 mm



PRECIOSA Rocailles™

311 19 001; 8/0



Preciosa Ornela introduces beads and seed beads from the PRECIOSA Traditional Czech Beads™ brand.

Preciosa-Ornela.com



FRIGHTENING EARRINGS

Skeleton

PRECIOSA

Skeleton

Ooh, ooh! The scariest day of the year is fast approaching - Halloween. Do you like being frightened? Do you like the slight squirm of your stomach and the light tingling on your back? Do you enjoy giving your neighbour a bit of a fright and preparing for it with your children? This year, try making a skeleton from the wide range of PRECIOSA beads and seed beads.

Materials and tools:

PRECIOSA Pressed Bead – skull (S)
111 30 547; 20 x 16 mm; 1x



PRECIOSA Hill™
151 01 375; 8 mm;
03000 white; 8x (H1)



151 01 375; 6 mm;
03000 white; 10x (H2)



PRECIOSA Candy™ (C)
111 01 363; 8 mm;
02010 white; 2x



PRECIOSA Rocailles (R)
311 19 001; 8/0;
03050 white; 66x



- a chain (10 links, 2.7 cm); 30 mm and 40 mm eye pins; 5 mm rings; earring hooks



- needle-nose pliers; snipping pliers; flat-nose pliers

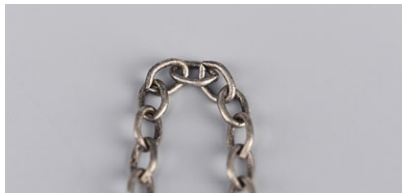


Difficulty: ●●●●●

Technique: eye pin linking

Procedure:

Step 1:
Snip off 29 links of chain.
Fold it in half. Prepare the central link.



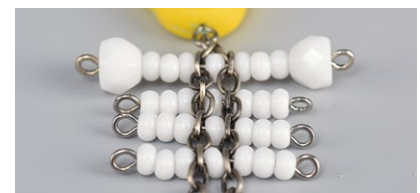
Step 2:
Link the S with an eye pin.
String the S (from the crown) onto an eye pin (30 mm). The protruding wire should be about 8-10 mm long. You can shorten it by using the snipping pliers.
Grasp the wire between the jaws of the needle-nose pliers.
Twist it around the points.
Gently twist it around the edge of the hole.
The eye will be located symmetrically above the hole. Insert the central chain link before fully closing the eye.



Step 3:
String 1x H1, 3 x R, the 2nd link down from the central link on one half of the chain, 1x R, the 2nd link down on the other half of the chain, 3x R and 1x H1 onto an eye pin (40 mm). Create the second eye on the pin. Both the eyes on the eye pin should be twisted in the same way (the same plane). Adjust them using the flat-nose pliers.



Step 4:
String 3x R, the 4th link on one side of the chain, 1x R, the 4th link on the other half of the chain and 3x R.
Create the second eye on the pin.
Create three more ribs in the same way.
Thread the 6th and 8th links on the chain.



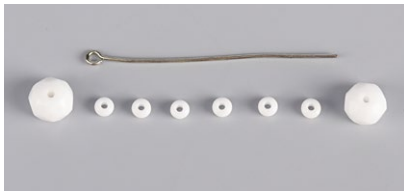
Step 5:

String 1x **C**, the last link of the chain, 1x **R**, the last link of the chain and 1x **C**. Create the second eye. The eyes on this eye pin should be twisted in the same way. String the second hole of the **C**, the 3rd link from the end of the chain, 1x **R**, the 3rd link from the end of the chain and the second hole of the **C**. Create the second eye on the pin.



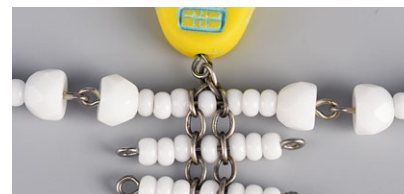
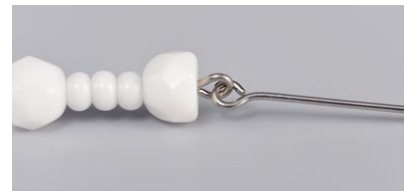
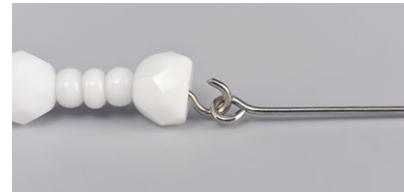
Step 6:

String 1x **H2**, 6x **R** and 1x **H2** onto an eye pin (40 mm). Create the second eye on the pin. Proceed in the same way three more times. Connect two and two „bones“ with a ring. Then attach the „legs“ to the lower „pelvis“ eyes by the **C** using a ring.



Step 7:

String 1x **H1**, 3x **R**, 1x **H1** onto an eye pin (30 mm). Create the second eye on the pin. Insert an eye from another eye pin before fully closing the eye. Once again string 1x **H1**, 3x **R** and 1x **H1**. Create the second eye on the pin. Hang it on the eye by the „shoulder“ before fully closing it. Create the second „arm“ in the same way.



Step 8:

Connect the top eye on the **S** to an earring hook.

