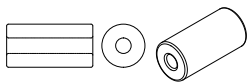




Design by Helena Chmelíková

PRECIOSA Rola™

341 59 001; 10 x 5 mm; 7,3 x 5 mm; 5,3 x 5 mm



PRECIOSA Rocailles

331 19 001; 8/0



PRECIOSA Rocailles

311 19 001; 8/0



*Preciosa Ornela introduces beads and seed beads
from the PRECIOSA Traditional Czech Beads™ brand.*

Preciosa-Ornela.com



SMALL CHRISTMAS TREE MADE USING PRECIOSA ROLA™

Christmas *Tree*



PRECIOSA

Christmas Tree

Enhance the advent mood by making small Christmas trees from PRECIOSA Rola™ Seed Beads in several dimensions before you decorate your „main“, full-sized, fragrant Christmas tree. Bring joy to yourself and your loved ones and add them to your gift arrangements.

Materials and tools:

PRECIOSA Rola™
341 59 001; 10 x 5 mm (RO1)
53210 green; 18x



341 59 001; 7 x 3,5 mm (RO2)
53210 green; 24x



341 59 001; 5 x 3,5 mm (RO3)
53210 green; 18x



PRECIOSA Rocailles (R)
331 19 001; 8/0;
68388 the gold variant; 60x



PRECIOSA Rocailles (R)
311 19 001; 8/0;
53240 the green variant; 60x



311 19 001; 8/0;
the mixed variant
(03050 white, 93110 orange, 93190 red,
33210 blue and 23420 purple); 60x



PRECIOSA Fire Polished Beads (FPB)
151 19 001; 8 mm;
00030/97487 the gold variant; 2x



151 19 001; 8 mm;
50030 the green variant; 2x



151 19 001; 8 mm;
93200 the mixed variant; 2x




- a long eye pin; a rubber earring stop



- a thin nylon thread in the color tone;
a thin needle; scissors; needle-nose pliers;
snipping pliers



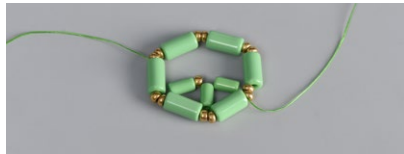
Difficulty: 

Procedure:

Step 1:
String 6x RO1 with 2x R8 between them.
Tie them off.



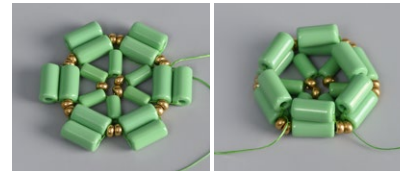
Step 2:
String 2x RO2 above the RO1 in a triangle and
1x R between them. String 1x RO2 above
the adjacent RO1 and pass the thread through
the internal side RO2.



Step 3:
Repeat Step 2 another 2 times. This will establish
a circle with internal spokes.



Step 4:
String by 1x RO1 above each RO1 around
the circumference of the circle.



Step 5:
String 1x R between each protruding RO1.



Step 6:
String 1x RO1 above each RO1.



Step 7:
Connect the newly strung RO1.



Step 8:
String 1x RO2 above each RO1.



Step 9:
Add 2x R between the strung RO2.



Step 10:
Create an internal circle with spokes out of RO3
and R. Use the procedure from Steps 2 and 3.



Step 11:
String new RO2. Connect them and add 1x R.



Step 12:
String new RO2 and connect them.



Step 13:
String RO3. Connect them and add 1x R.



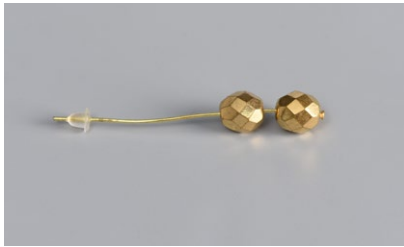
Step 14:
String new RO3 and connect them.



Step 15:
Put 2x FPB onto the eye pin. Secure the end of the pin with the rubber stop. The lower FPB will be hidden inside the tree.



Step 17:
Tighten - move the pin.
Shorten the protruding part to about 1 cm. Before snipping, hold the wire above the FPB. Be careful the pin doesn't slip. Grasp the end of the wire between the points of the pliers and twist it around them.



Step 16:
Alternately string 1x R and 2x R above the RO3. Connect them. Insert the pin with the FPB. Tighten. String 1x R above each R and connect them up. You can repeat the connection process. Sew in.



Sewing in and connecting the thread

When sewing in, create a loop from the thread and pass the thread through it twice. Tighten. Pass the needle through part of the material. Repeat the knot. Pull the end of the thread into the surrounding material and cut it off. You will sew the thread in several times on the overall tree and start again. Begin by threading around the circumference of the circle and tying off the ends.

You can stand the tree up or hang it from the loop.

