



Design by Helena Chmelíková

PRECIOSA Candy Oval

111 01 388; 6 x 8 mm



PRECIOSA Rocailles

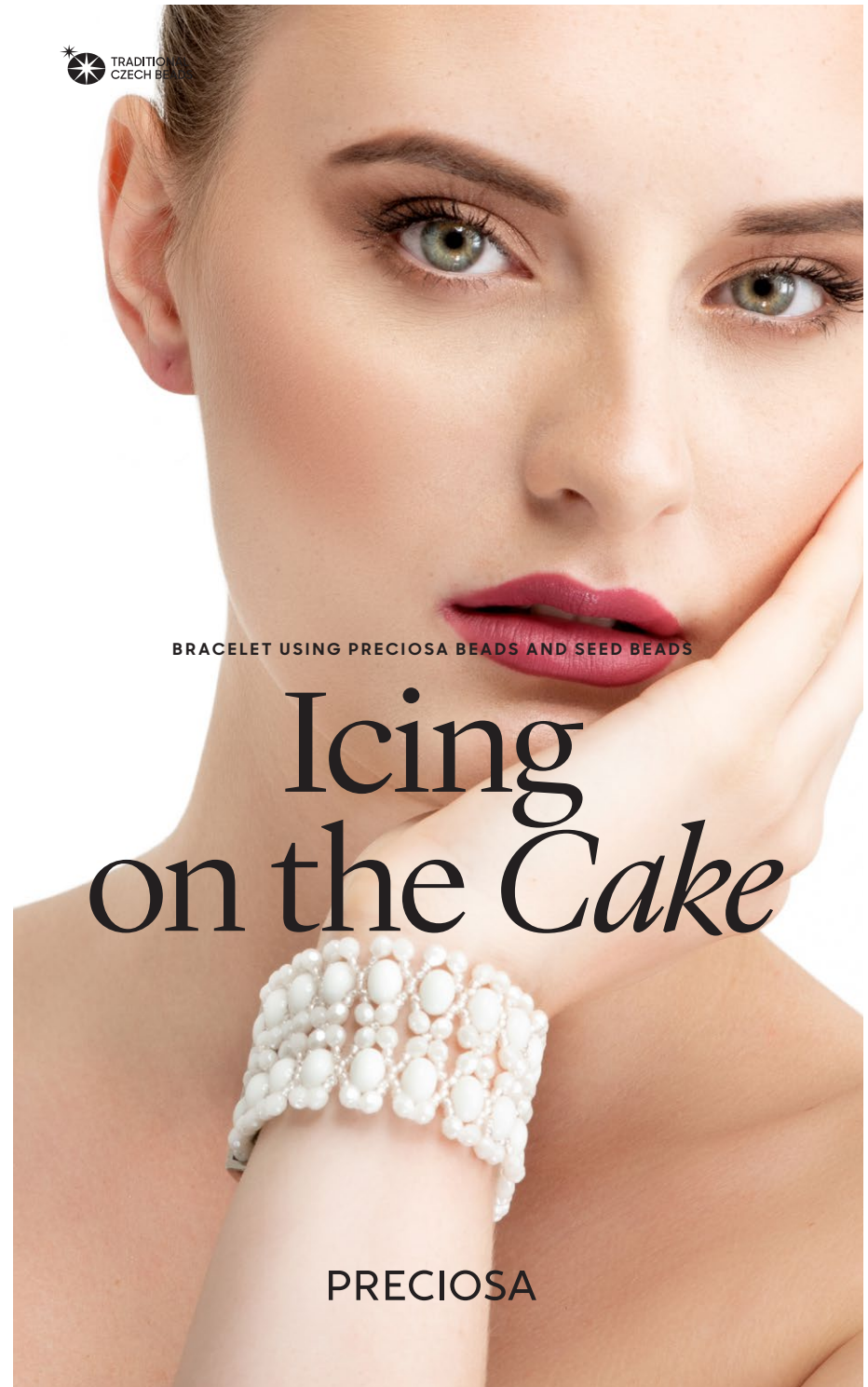
331 19 001; 10/0

311 19 001; 8/0



*Preciosa Ornela introduces beads and seed beads
from the PRECIOSA Traditional Czech Beads™ brand.*

Preciosa-Ornela.com



BRACELET USING PRECIOSA BEADS AND SEED BEADS

Icing on the Cake

PRECIOSA

Icing on the Cake

This exceptional accessory coaxed from molten glass is a byword for delicacy and elegance combined with distinctiveness. It makes use of the combination of the pressed, rounded shape of PRECIOSA Candy Oval and PRECIOSA Fire Polished Beads with their geometric facets. These beads are bound to inspire you to embark upon further creative beadworking.

Materials and tools:

PRECIOSA Candy Oval (CO)
111 01 388; 6 x 8 mm;
83500; 16x; ivory



PRECIOSA Fire Polished Beads (FPB)
151 19 001; 4 mm;
83500/21402; 128x; ivory



PRECIOSA Rocailles
331 19 001; 10/0;
382PI; 340x; ivory lining (R10)



311 19 001; 8/0;
03050; 16x; a light shade (R8)



- a magnetic clasp (a width corresponding to the width of the bracelet; ca 4 cm)

- a 0.20 mm nylon line; a thin needle;
scissors; glue for non-absorbent material



Difficulty: ●●●●●

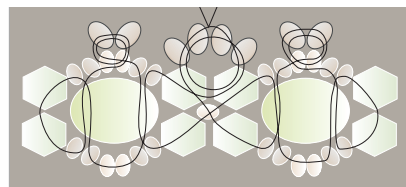
Technique: the right-angle weave stitch, gluing

Procedure:

The bracelet consists of 16 rows (the total length with the clasps is 17.5 cm). The end rows include projections made from the R8 that are used for gluing onto the clasps. Pay attention to the orientation of the CO during sewing; the rounded section should be at the top.

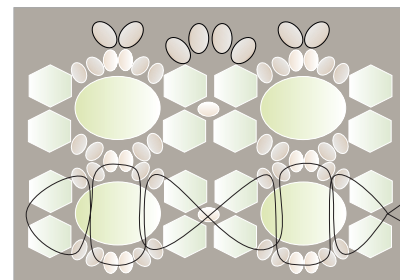
Step 1:

Start the first row with the projections. Secure the initial R8 - thread the line through it one more time. Continue up to the CO according to the drawing. Sew one side around the CO. Then move to the second CO. Thread the line through the projections 2x; the middle one should be done at the end of sewing the row. Tie off the line and pull it into the holes.



Step 2:

Sew the next row. Secure the first FPB. Start sewing at the side. Continue to the opposite side. Fill in the rest when returning to the beginning. Don't forget to connect the rows at the R10. There are 14 of these rows. You can add or subtract rows as you require.



Step 3:

Sew the final row. Use the same procedure as in Step 1. Don't forget to connect the row with the previous one at the R10.



Step 4:

Apply the glue to the clasps and insert the projections from the outer rows. Leave them to dry.

