

Step 4:

Cut the 1st and 11th thread in the warp on both sides of the loom frame. Tie them to the 2nd and 10th threads of the warp just behind the woven section. Weave the end bands. Start weaving the remaining thread at the beginning and end of the bracelet using the needle. Weave about 3 to 5 mm. Reinforce the bands with the super glue. Cut the warp from the band once the glue has dried.



Step 5:

Assembly. Glue the bands to the ends.



Design by Helena Chmelíková

PRECIOSA Farfalle™

321 90 001; 2 x 4 mm

321 93 001; 2 x 4 mm



*PRECIOSA ORNELA introduces seed beads
from the PRECIOSA Traditional Czech Beads™ brand.*

preciosa-ornela.com



TRADITIONAL
CZECH BEADS

Cobbles

WOVEN BRACELET MADE OF PRECIOSA Farfalle™



PRECIOSA

Cobbles

You can use the ribbon shape of the PRECIOSA Farfalle™ seed beads when working with them on a small weaving loom. Their drop-shaped ends glisten thanks to the magnifying optical effect. Choose from the endless range of tones and surface finishes. Try out various color combinations, patterns and ornaments.

Materials and tools:

PRECIOSA Farfalle™ (F)

The blue variant

321 90 001; 2 x 4 mm;
59135 blue iris; 152x



321 90 001; 2 x 4 mm;
26331 marble blue; 120x



321 90 001; 2 x 4 mm;
37030 light blue; 120x



321 93 001; 2 x 4 mm;
18503 light grey; 114x



321 90 001; 2 x 4 mm;
00051 dark grey; 82x



The pink variant

321 90 001; 2 x 4 mm;
68388 gold; 152x



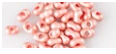
321 93 001; 2 x 4 mm;
18583 matt gold; 120x



321 90 001; 2 x 4 mm;
07633 pink; 120x



321 93 001; 2 x 4 mm;
18595 matt pink; 114x



321 90 001; 2 x 4 mm;
01770 copper; 82x



The green variant

321 90 001; 2 x 4 mm;
18558 metallic green; 152x



321 90 001; 2 x 4 mm;
57220 light green; 120x



321 90 001; 2 x 4 mm;
56220 green luster; 120x



321 93 001; 2 x 4 mm;
80010 matt yellow; 114x



321 90 001; 2 x 4 mm;
80010 yellow; 82x



- 1.7 cm magnetic flat ends

- medium strength thread (for example Belfil-S 30 polyester); a thin long needle (and lengthened eye); scissors; a small loom; super glue; glue for absorbent - non-absorbent material; thin tailor's thread

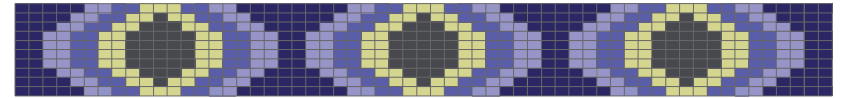
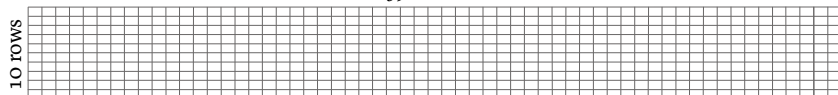


Difficulty: ●●●●●

Procedure:

The bracelet is 2 cm (10 rows) wide.
The woven section consists of 59 columns.
The full bracelet is about 18.5 cm long.

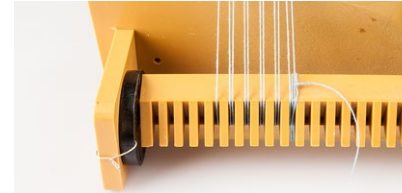
59 columns



- blue iris (gold, metallic green)
- marble blue (matt gold, light green)
- light blue (pink, green luster)
- light grey (matt pink, matt yellow)
- dark grey (copper, yellow)

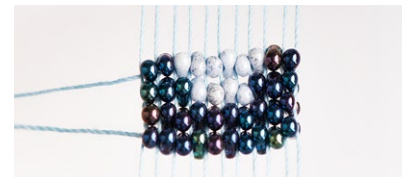
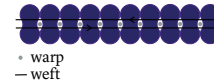
Step 1:

Fill the warp with 11 threads. Use a shade which is similar to that of the bracelet. Tie off the thread at the edge of the loom. Pull the thread from one side to the other 11x. Once again, tie off the end at the edge.



Step 2:

Thread the F according to the illustration. Cut the long thread diagonally (at about an arm's span). Thread it directly into the eye. String 10x F. Move them along the thread. Leave about 50 cm of the thread free. Press the F to the warp from the bottom, Pass the thread through them from above to create the weft. The weft will be difficult to tighten at the start. This problem will resolve itself after the creation of several columns.



Step 3:

Tying the threads. Create a complete column on the remaining thread. Leave about 20 cm free at the end of the remaining thread. String a new thread. leave about 20 cm free at the end of the thread. Continue weaving the columns.

Tie off the ends of the threads with two knots. Pull the thread into the F and cut it. String about 15 cm of thin tailor's thread in the needle's eye and tie off the ends for easier handling. A large universal loop will be created. After creating the woven part, you will need about another 50 cm on the remaining thread. You need to tie off the thread; do this at least 3 columns before the end of the woven section.

