

PRODUCT CATALOGUE

„Desná“ *Decorative Glass*



PRECIOSA



„Desná“ *Decorative Glass*

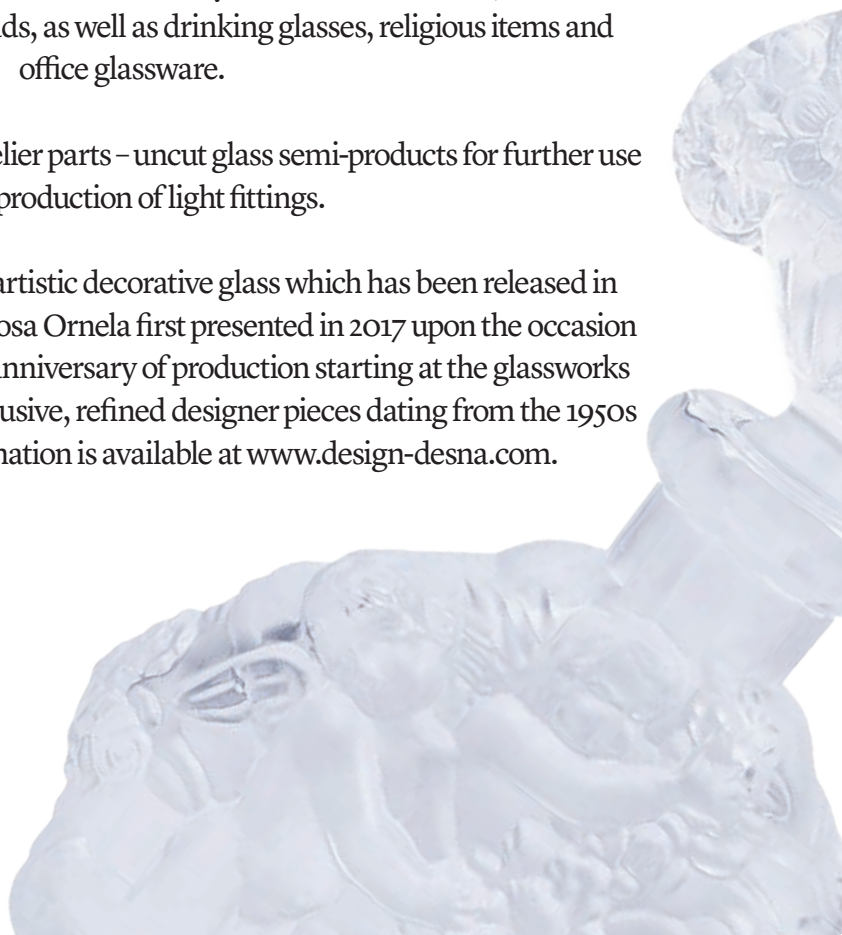
The extensive collection of artistic decorative glass and smooth cut glass has a long history which follows on from the pre-war tradition of unique products made by the Jablonec companies of Heinrich Hoffmann and Curt Schlevogt. This especially applies to the „Ingrid“ collection, which has been created with contributions from artists of European and international renown.

Contemporary decorative glass from „Desná“, which proudly bears the product name Desná Since 1847®, is not only based on the original „Ingrid“ collection, but also on designs from other local pre-war companies, as well as those of post-war and contemporary designers.

Decorative glass products are distinguished by high quality, traditional manual work and modern glassmaking technology. They can be divided into several product groups. Small-scale decorative and utility items include flacons, vases and automobile radiator figureheads, as well as drinking glasses, religious items and office glassware.

A further group includes chandelier parts – uncut glass semi-products for further use in the production of light fittings.

Last but not least, there is the artistic decorative glass which has been released in the limited edition, which Preciosa Ornela first presented in 2017 upon the occasion of the celebration of the 170th anniversary of production starting at the glassworks in Desná. This involves five exclusive, refined designer pieces dating from the 1950s to the 1970s. More information is available at www.design-desna.com.



„Tree trunk“ vases
DESIGN BY VÁCLAV HANUŠ



Václav Hanuš

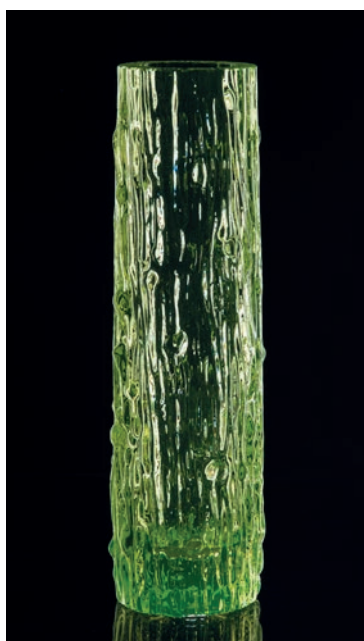
(1924 - 2009)

Glass Designer and Artist

Václav Hanuš graduated from the Turnov School of Jewelry (1939 - 1943) and the Academy of Arts, Architecture and Design in Prague (under prof. Karel Štipl, 1943-1949), where he served as an Assistant Professor and Artistic Fellow (1949-1954). During his studies he worked at the Lobmeyer Studio in Kamenický Šenov, at the Josefodol Glass Factory in Světlá nad Sázavou, and at the Rudolfova Glassworks in Dubí near Teplice, where he subsequently worked as a designer from 1955 to 1957. Later Hanuš worked as a designer for Skloexport (1959-1960) after which he became the head designer at the Jablonecké sklárny (Jablonec Glassworks) up until his retirement (1961-1985). Afterwards he continued to cooperate with the glassworks and its designers as well as working as a glass artist on his own. In 1993 he received the Masaryk Academy of Arts Award for his contribution to art.



260-025594-8-00-0000-240-00-10056



260-025595-8-00-0000-300-00-10056



260-025594-8-00-0001-240-00-10056



260-025595-8-00-0001-300-00-10056





260-025594-8-00-0000-180-00-00426



260-025594-8-00-0000-240-00-00426



260-025595-8-00-0000-300-00-00426



260-025594-8-00-0001-180-00-00426



260-025594-8-00-0001-240-00-00426



260-025595-8-00-0001-300-00-00426



260-025588-8-00-0001-205-00-00426



260-025575-8-00-0001-220-00-00426

Ashtrays
DESIGN BY VÁCLAV PLÁTEK



Václav Plátek

(1917 - 1994)

Glass and Jewelry Artist, Designer, Glyptic Artist, Illustrator, Art Educator

Václav Plátek graduated from the Železný Brod School of Glass and the Academy of Arts, Architecture and Design in Prague (under prof. František Kysela, 1935-1940). After 1948, he sequentially held the post of Chief Artist at a number of local companies including Borské sklo, Železnobrodské sklo, and the Ústřední výtvarné středisko pro průmysl skla a keramiky (Central Art Center for the Ceramics and Glass Industries). Between 1957 and 1960 Plátek designed glassware as the company designer at the Jablonecké sklárny (Jablonec Glassworks). After leaving this company, he worked as a docent at the Academy of Arts, Architecture and Design in Prague (cutting and engraving, glyptics, and design of household glass, 1960-1977). In 1982 he was honored as an Artist of Outstanding Merit.



260-032731-7-00-0000-110-00-20016



260-032733-7-00-0000-150-00-00426



260-032731-7-00-0000-110-00-00426

Vases Tracks

DESIGN BY JOSEF KRUML



Josef Kruml

(*1957)

Designer, design engineer and glass shaping and working technologist

Josef Kruml was accepted into the glass engraving course at the Glass Industry Secondary School in Kamenický Šenov in 1973 and he graduated in 1977. In 1979, he entered the Glass Shaping and Working Department of the Technical Development Section at the Jablonecké sklárny Desná state enterprise. He subsequently became part of the Design Department as a designer in 1983. He has also performed design and production preparation activities in operations in Janov nad Nisou, Josefův Důl, Smržovka and Lučany nad Nisou. He performed design activities in the successor companies of Desenské sklárny and Ornela a.s. until 1993, when Ornela a.s. cancelled the position of internal designer.

As well as the preparation and realisation of commercial products, he was also involved in the preparation of the production of sets and solitary pieces based on his designs at that time. He is currently involved in production innovation in the Technical Production Preparation Section at Preciosa Ornela in Desná.



260-025730-8-00-0002-230-00-00426



260-025730-8-00-0001-230-00-00426







260-025526-8-00-0000-270-00-00426



260-025526-8-00-0000-270-00-20016



260-025526-8-00-0000-200-00-00426



260-025590-8-00-0001-230-00-00426



260-025590-8-00-0001-180-00-00426



260-025576-8-00-0001-230-00-00426



260-025592-8-00-0001-250-00-00426



260-025592-8-00-0002-250-00-00426



260-025593-8-00-0001-120-00-00426



260-025593-8-00-0002-120-00-00426

Scent *bottles*





13273/160
scent bottle Timid force



13804/160
scent bottle Cherubs



13806/170
scent bottle Bluebells



14061/145
scent bottle Cliff



14068/170
scent bottle Three Little Fairies





13895/170
Mák/Poppy



13899/145
Florencie/Florence

Vases





25288/260
vase Motherhood



25358/235
vase Roses



25529/125
vase Small Grape Harvest



25530/205
vase The Great Grape Harvest



25623/230
vase Desire



85015/150
vase Echo



Art. No. 25531 Tanec/Dance
Size 240 mm | Color křišťál/crystal



Art. No. 25802 Ženci/Harvesters
Size 230 mm | Color křišťál/crystal



Art. No. 85019 Vábění/Alluring
Size 330 mm | Color křišťál/crystal



Art. No. 25802 Lidé/People
Size 215 mm | Color křišťál/crystal



Art. No. 25443 Děti/Children
Size 170 mm | Color křišťál/crystal



Art. No. 25443 Děti/Children
Size 170 mm | Color vodní modř/water blue



Art. No. 50848 Po koupeli/After Bath
Size 170 mm | Color křišťál/crystal



Art. No. 85025 Plejády/The Pleiades
Size 340 mm | Color křišťál/crystal



Art. No. 25530 Velké Vinobraní/The Great Grape Harvest
Size 205 mm | Color sv. hnědé jade/lt. brown jade



Art. No. 25529 Malé Vinobraní/The Small Grape Harvest
Size 125 mm | Color sv. hnědé jade/lt. brown jade



Art. No. 25299 Motýlci/Butterflies
Size 80 mm | Color vodní modř/water blue



Art. No. 25730 Prsty/Fingers
Size 230 mm | Color křišťál/crystal



Art. No. 25611 Korálky/Beads
Size 230 mm | Color křišťál mat/crystal matt



Art. No. 25611 Korálky/Beads
Size 230 mm | Color křišťál/crystal



Art. No. 25611 Korálky/Beads
Size 230 mm | Color vodní modř/water blue



Art. No. 14455 Tulipány/Tulips
Size 180 mm | Color křišťál/crystal



Art. No. 25607 Zrcátka/Mirrors
Size 180 mm | Color křišťál/crystal



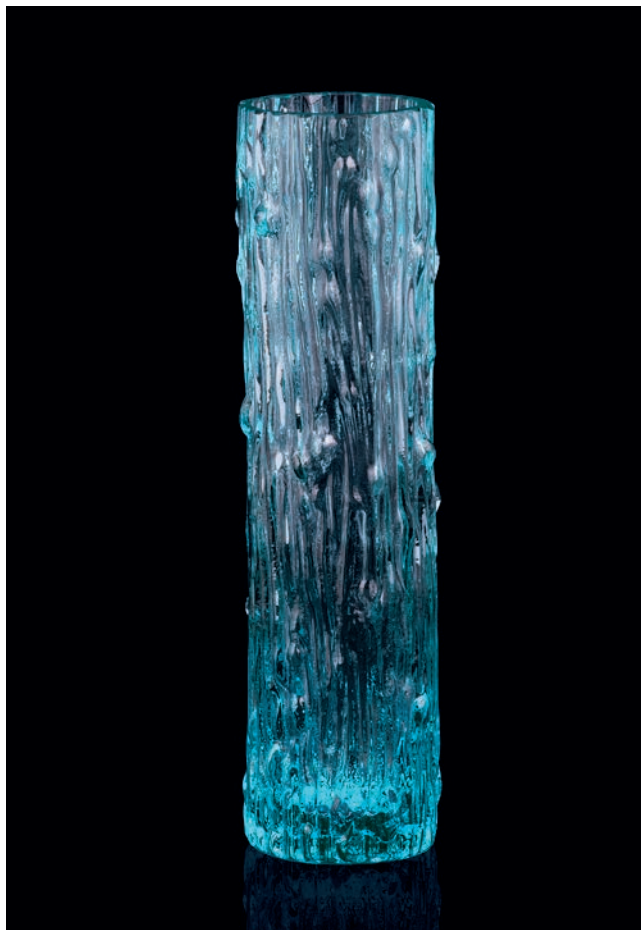
Art. No. 25617 Zrcátka/Mirrors
Size 250 mm | Color křišťál/crystal



Art. No. 25617 Zrcátka/Mirrors
Size 200 mm | Color křišťál/crystal



Art. No. 25595 Sukáč/Thorn tree
Size 300 mm | Color sv. hnědé jade/lt. brown jade



Art. No. 25594 Sukáč/Thorn tree
Size 240 mm | Color vodní modř/water blue



Art. No. 25594 Sukáč/Thorn tree
Size 240 mm | Color sv. hnědé jade/lt. brown jade



Art. No. 85016 Hebkost/Softline
Size 250 mm | Color ušlechtilá zelená/noble green



Art. No. 85014 Volnost/Freeline
Size 340 mm | Color ušlechtilá zelená/noble green

Statuettes





27908/100
statuette Madonna



27911/75
statuette Madonna



27913/60
statuette Madonna



27934/130
statuette Madonna with Child



27930/165
statuette Head of the Madonna



29061/180
statuette Madonna's Head with Child



27929/140
statuette St. Theresa



80055/105
figurine Immaculata



27350/270
statuette Our Lady of Lourdes



27924/220
statuette Crucifixion



27931/165
statuette Head of Christ



27928/150
statuette Jesus Christ



28029/170
statuette Bath Attendant



28052/150
statuette The Future



28053/260
statuette Lovers



28044/235
statuette Night Butterfly



85022/180
statuette Fair Ingrid



27228/200
statuette Shy Girl



27229/210
statuette Dancing Girl



27230/220
statuette Girl in the Wind



28018/100
statuette Cat



28103/190
statuette Eagle



80060/125
statuette Greyhounds



80063/135
statuette White Horse



80059/170
Mistrál/Mistral



28042/160
Kleopatra/Cleopatra



28046/165
Koňská hlava/Horse's Head



80062/130
Lebka/Memento Mori



28049/180
Veverka b.p./Squirell w.p.



28049/180
Veverka/Squirell



80088
Kohout b.p./Rooster w.p.



80088
Kohout/Rooster



28043/200
Sova b.p./Owl w.p.



28043/200
Sova/Owl



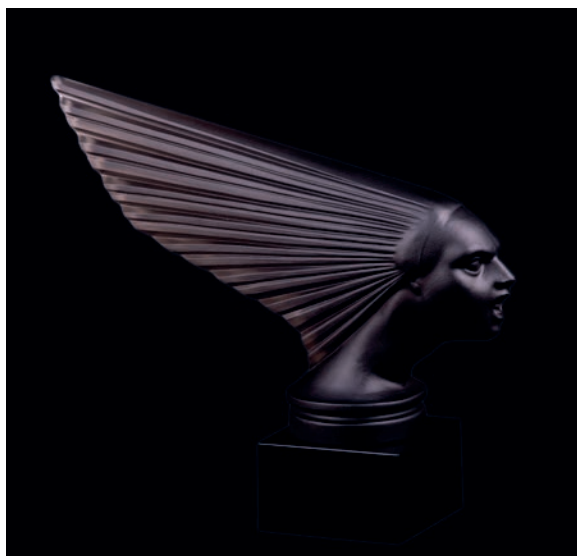
28050/175
Vozataj b.p./Baudicea w.p.



28050/175
Vozataj/Baudicea



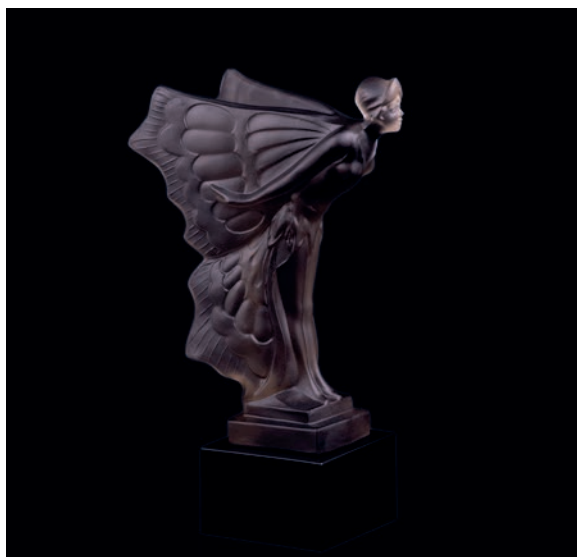
80030/210
Snilci/Dreaming



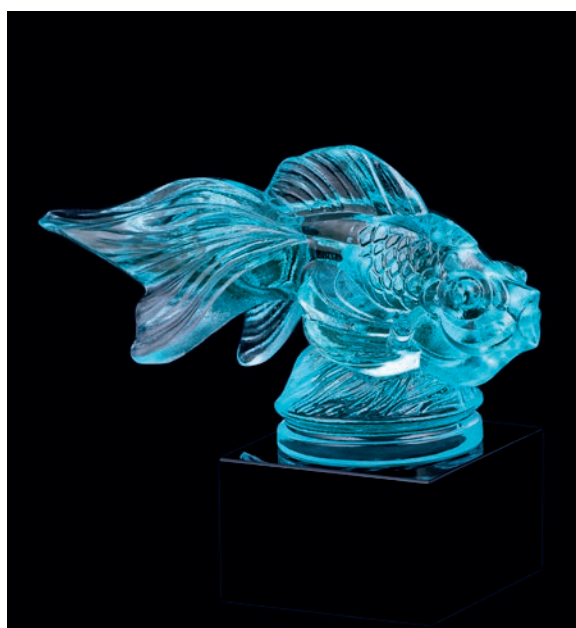
28051/200
Art Deco/ Art Deco



28044/235
Noční motýl/Night Butterfly
vodní modř/water blue



28044/235
Noční motýl/Night Butterfly
antik/antique



28047/125
Ryba/Fish



80081/230
decoration Kneeling Woman



80082/180
decoration Head



80083/190
decoration Shaft



80085/215
decoration Woman with the Lion



80084/160
Orel/Eagl
křišťál/crystal



80083/190
Paprsky/Shaft
vodní modř/water blue



80082/180
Cyklista/Biker
antik/antique



80082/182
Cyklista/Biker
vodní modř/water blue

Figurines





27877/75
figurine Venus



28239/80
figurine Spring



28240/80
figurine Summer



28241/80
figurine Autumn



28242/85
figurine Winter



28283/80
figurine Child



80057/70
figurine Countrywoman





27878/100
figurine Sparrow I



27879/50
figurine Sparrow II



27880/60
figurine Sparrow III



27844/80
figurine Lion



27881/120
figurine Hare I



27882/40
figurine Hare II



28292/50
figurine Elephant



28293/45
figurine Polar Bear



28257/50
figurine Bear



28258/60
figurine Cock



28260/70
figurine Bulldog



28261/40
figurine Lion



28262/50
figurine Hare



28265/45
figurine Dog



28269/20
figurine Mouse



28270/50
figurine Basset



28273/90
figurine Horse



28276/40
figurine Cats



28284/70
figurine Swan



28287/40
figurine Bison



28288/45
figurine Dog



28296/45
figurine Lion



80053/55
figurine Wise Owl



80079/135
figurine Cats



28268/45
figurine Fox



27888/190
Kohout/Rooster



85038/50
Sloni/Elephants



80087
Labut/Swan

Decorations





32820/145
decoration Large Bath



32827/85
decoration Small Meditation



32829/105
decoration Small Bath



80045/135
decoration Susan at her bath



85017/230
Elektra/Electra





28077/160
statuette Kitty



80061/190
decoration Mephisto



80036/80
decoration Beautiful Atlanta



80037/90
glass Penguin

Miscellaneous





32799/170
ashtray Leopards



80040/120
ashtray Siesta



37261/60
glass Roses



85031/150
candleholder Perseus



50472/205
box with lid Turtle



50472/205
Pegasové/Winged horses

PRECIOSA Traditional Czech Glass

A member of the Preciosa Group

Preciosa Group is a global leader in products manufactured from crystal. From the world famous Czech Beads and Crystal Components used in fashion industry, to tailor made Lighting projects for luxury hotels, royal palaces and yachts, the true craftsmanship of crystal production has been present in Bohemia since 16th century.

Preciosa-Ornela.com