

FULLY COMPATIBLE FUSING GLASS

# LIBIA

## *Colors 96*



PRECIOSA

FULLY COMPATIBLE FUSING

# LIBA Colors 96

*Preciosa Ornela presents a collection of colored smoothly fusible glass  
under the name "LIBA Colors 96".*

*This semi-product is produced in the form of poured rods and it is suitable for processing with  
various melted connection techniques (for example, fusing). It can be used to produce melted  
colored objects which are subsequently shaped.*

*The glass composition has been optimised so that all the colors are compatible and do not crack  
during any subsequent processing.*

## *The color range*

00035 LIBA 2000+ LC96



01300 white opal LC96\*



10030 topaz LC96



20300 violet LC96



\* Tempering colors - it is necessary to reheat the rods to achieve the final shade.

FULLY COMPATIBLE FUSING

# LIBA Colors 96

23980 black LC96



30010 sapphire LC96



40010 smoke grey LC96



50610 blue peridot LC96



60010 aquamarine LC96



60200 green aquamarine LC96



\* Tempering colors - it is necessary to reheat the rods to achieve the final shade.

FULLY COMPATIBLE FUSING

# LIBA Colors 96

70000 pink crystal LC96 (UV active)



80010 amber LC96\*



80130 anna yellow LC96 (UV active)



82010 amber alabaster LC96\*



90070 ruby LC96\*



92070 ruby alabaster LC96\*



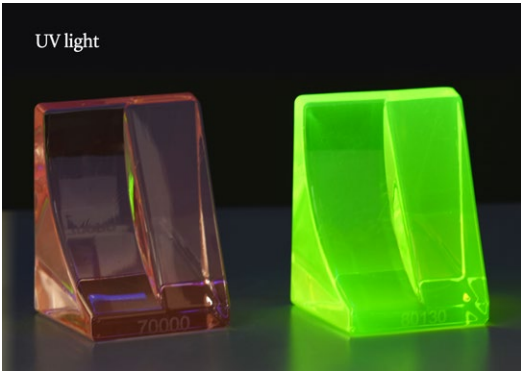
\* Tempering colors - it is necessary to reheat the rods to achieve the final shade.



FULLY COMPATIBLE FUSING

# LIBA Colors 96

Example of color change of UV active glass 70000 and uranium glass 80130 under UV light.



Technical parameters	
Rod diameter - profile 10	30 x 30 x 1120 mm
Packaging	bundle 20 kg (MOQ 2 kg ntto from color = 1 rod)

Informative technical parameters	Units	Values
Specific gravity	kg / m <sup>3</sup>	2500 ± 50
Coefficient of expansion α	K <sup>-1</sup>	( 9,60 ± 0,15 ) x 10 <sup>-6</sup>
Transformation point t <sub>g</sub>	°C	500 ± 15
Deformation point t <sub>D</sub>	°C	575 ± 15
Softening point t <sub>L</sub>	°C	695 ± 10
Hydrolitic resistance at 98°C	class	HGB III
Informative chemical composition of the glass	%	<div><div>SiO<sub>2</sub></div><div>Na<sub>2</sub>O + K<sub>2</sub>O + CaO</div><div>ZnO + B<sub>2</sub>O<sub>3</sub> + MgO</div><div>MnO<sub>2</sub> + Cr<sub>2</sub>O<sub>3</sub></div></div> <div>68 20 5 2</div>

Detailed specifications are available for each color upon request.  
The main parameters are regularly laboratory checked.  
Each produced batch-lot is laboratory tested.

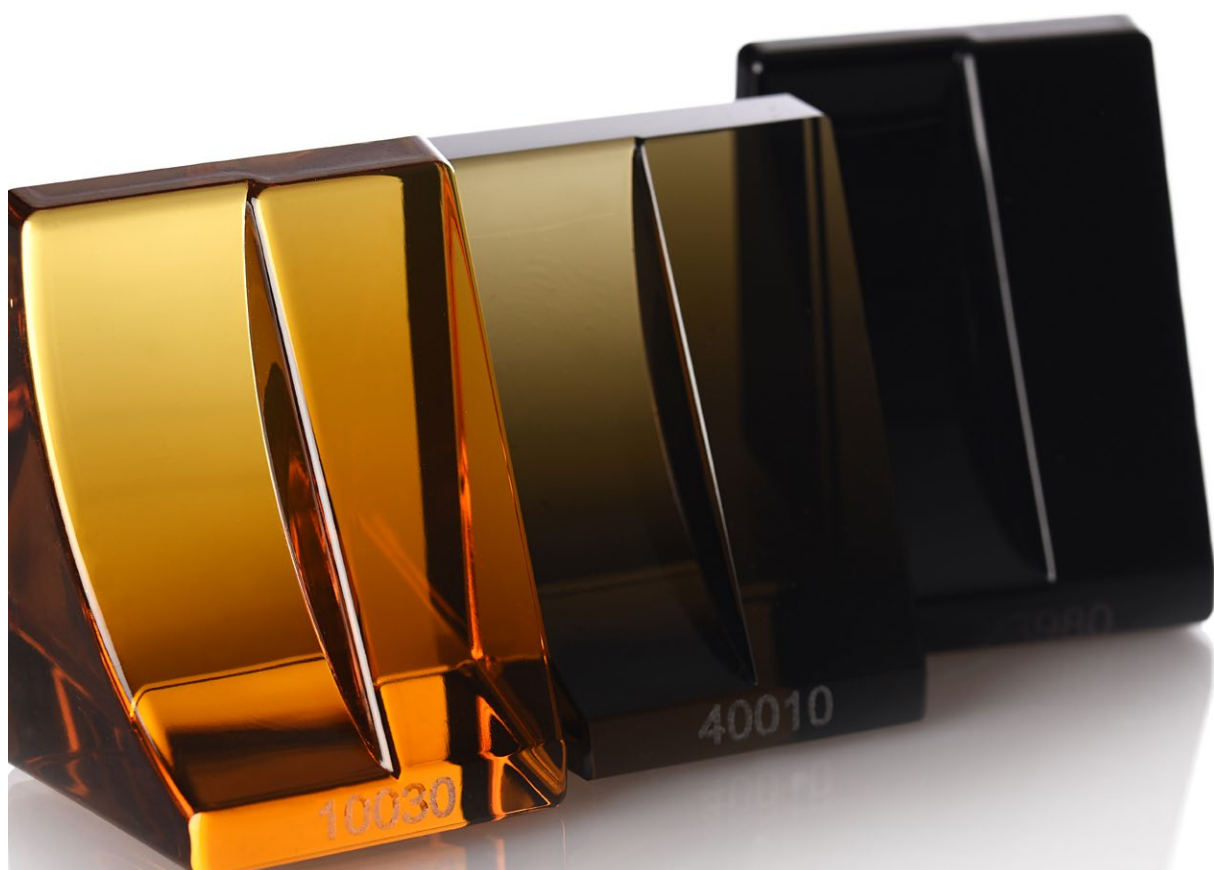
FULLY COMPATIBLE FUSING

# LIBA Colors 96



FULLY COMPATIBLE FUSING

# LIBA Colors 96



## PRECIOSA Traditional Czech Glass

A member of the Preciosa Group

Preciosa Group is a global leader in products manufactured from crystal. From the world famous Czech Beads and Crystal Components used in fashion industry, to tailor made Lighting projects for luxury hotels, royal palaces and yachts, the true craftsmanship of crystal production has been present in Bohemia since 16th century.

[Preciosa-Ornela.com](http://Preciosa-Ornela.com)